

# Multi Process Assembly Press Workstation

Product Information

*Atlas Copco*



***Designed for the Atlas Copco PST Press Spindle System, the Assembly Press Workstation, provides a flexible, ergonomic solution with a large working area for assembly press applications. The assembly press station was designed for the PST press system and provides a flexible easy to use and set up workstation, for one or more press operations, and improves offline press assembly processes.***

- ▶ PST50 Press H-Frame for 10 to 50 kN
  - Specific mounting plates (PST10, PST20, PST35 or PST50)
- ▶ PST Press Spindle minimum stroke of 200 mm is required
- ▶ Safety and ergonomic features
  - Guarding
  - Light curtains
- ▶ Integration and Process accessories available
  - Optional bases, press tables and platens available
  - Press tooling and quick change devices

**PST Press Spindle,  
Power Macs 4000  
controller and Cable**



**PST Press Station –  
H-Frame – PST50, Stationary  
Base and Plain Platen**



# Multi Process Assembly Press Workstation

## FEATURES

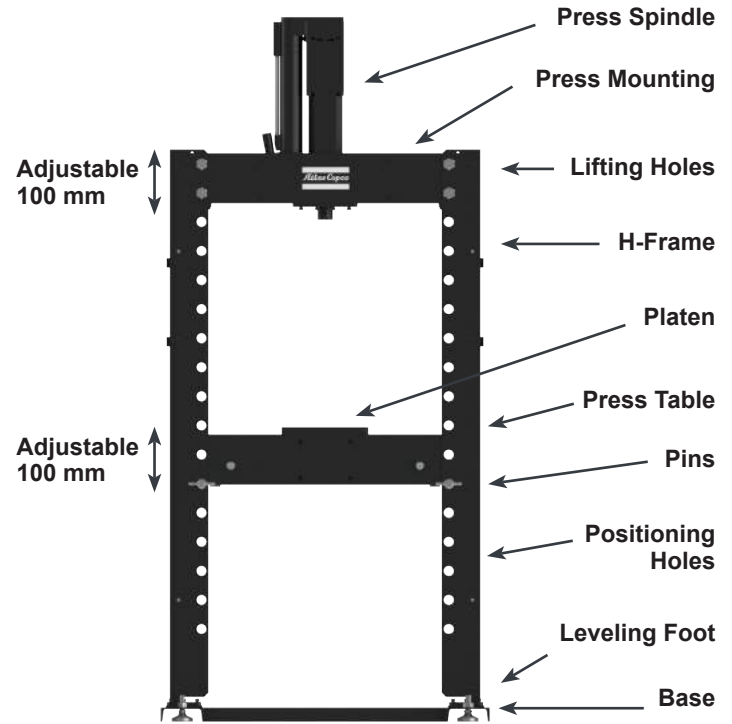
- ▶ PST50 Press H-Frame for 10 to 50 kN
  - 800 mm width x 1200 mm height x 140 mm depth
- ▶ Position holes
  - Tool and table adjustable in 100 mm increments
  - Press table sits on two removable pins, adjusted manually
  - Platen is a hardened steel plate, bolted to the press table
    - \*Available in different versions: plain, hole and slotted
- ▶ Mounting for controller, HMI and operator interface
- ▶ Leveling feet, anchor holes and lifting holes
- ▶ Integrated cable management



Leveling Feet

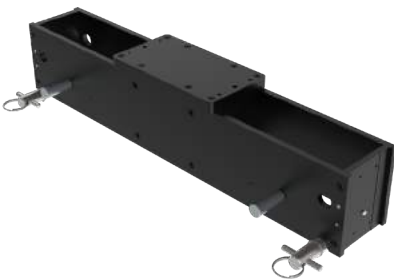
Cable Concealment

Cable Management



## BENEFITS

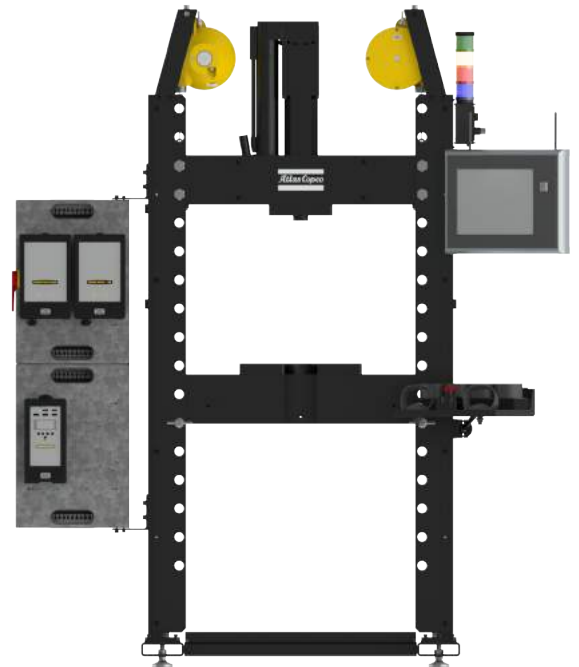
- ▶ Safety controls – two-hand tie down with stop
- ▶ Large working envelope for small to large part variations
- ▶ Easily adjustable to suit application height and ergonomic requirements
- ▶ Compact size to maximum floor space



Press Table with Platen

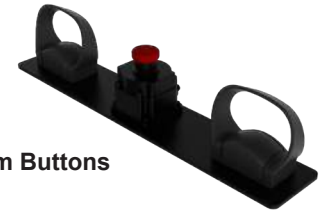


Slotted Press Table with Slotted Platen



## CONTROLS - STANDARD

- ▶ Palm buttons (two-hand tie down) and E-stop button
- ▶ Power Macs 4000 tightening controller
- ▶ Disconnect Box MSB I or II (480 VAC power required)
- ▶ Controller mounting



Palm Buttons

## CONTROLS - OPTIONS

- ▶ Stacklight
- ▶ HLT19Q (120 VAC power required) with articulated arm mounting
- ▶ Service box (for HLT19Q 120 VAC)
  - Allows for single 480 VAC power to MSB Disconnect Box
- ▶ Pin engagement verification - (2) proximity sensors
- ▶ Table position sensors for table height verification
- ▶ Light curtain

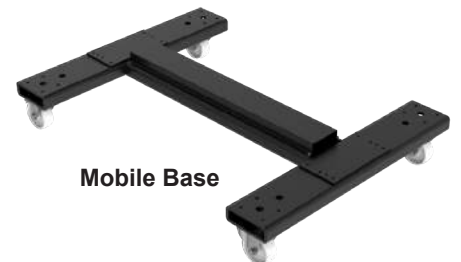


## OPTIONS

- ▶ Base
  - Stationary
  - Mobile
- ▶ Press table
  - Standard - press table
  - Slotted - press table
- ▶ Platen
  - Plain
  - Hole
  - Slotted
- ▶ Base/slide Press table
  - Stationary base with slide press table
    - \*Custom design to be quoted per application
- ▶ Safety guarding
  - \*Custom design to be quoted per application



Stationary Base



Mobile Base



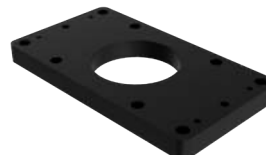
Standard - Press Table



Slotted - Press Table



Plain - Platen



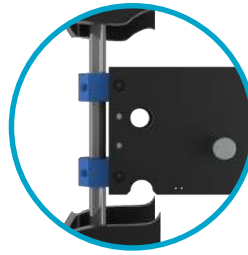
Hole - Platen



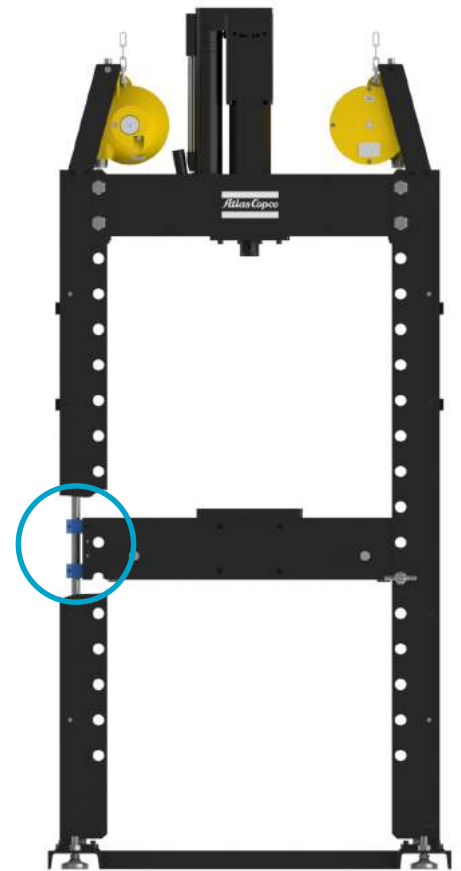
Slotted - Platen

## ACCESSORIES

- ▶ Press table lift
  - Spring balancer mounting (spring balancers not included) – includes vertical linear slide with lifting handles
    - \*Assist with lifting the press table/platen
- ▶ Miscellaneous
  - Fixing hardware kit – for stationary table
  - Platen – plain for mounting on slotted press table
- ▶ Software
  - ToolsTalk press
  - Operator Guidance Software



Internal linear guide system



Press Table Lift -  
Spring Balancer mounting

## STATION CONFIGURATION

- ▶ Mechanical content
  - PST Press Station – H-Frame
  - Stationary base – leveling feet
  - Press table
    - \*Platen – plain for mounting on press table
    - \*Manual table adjustment
- ▶ Controls content
  - Controller mounting
  - Disconnect Box MSB II (480 VAC power required)
  - Operator interface - palm buttons, E-stop and mounting – two-hand tie down
  - Stacklight
- ▶ Controls options
  - HLT19Q mounting
  - Service box (for HLT19Q 120 VAC)

