

Atlas Copco



Atlas Copco hand held screw feeding system

Maximize your productivity

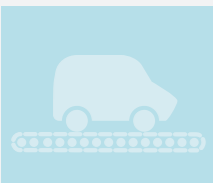
Hand held screw feeding system is part of Atlas Copco's **Smart Connected Assembly** - promoting the Industry 4.0 concept to make smart factory a reality



Increased uptime



Reduction in defects



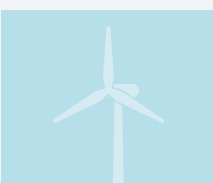
New product introduction



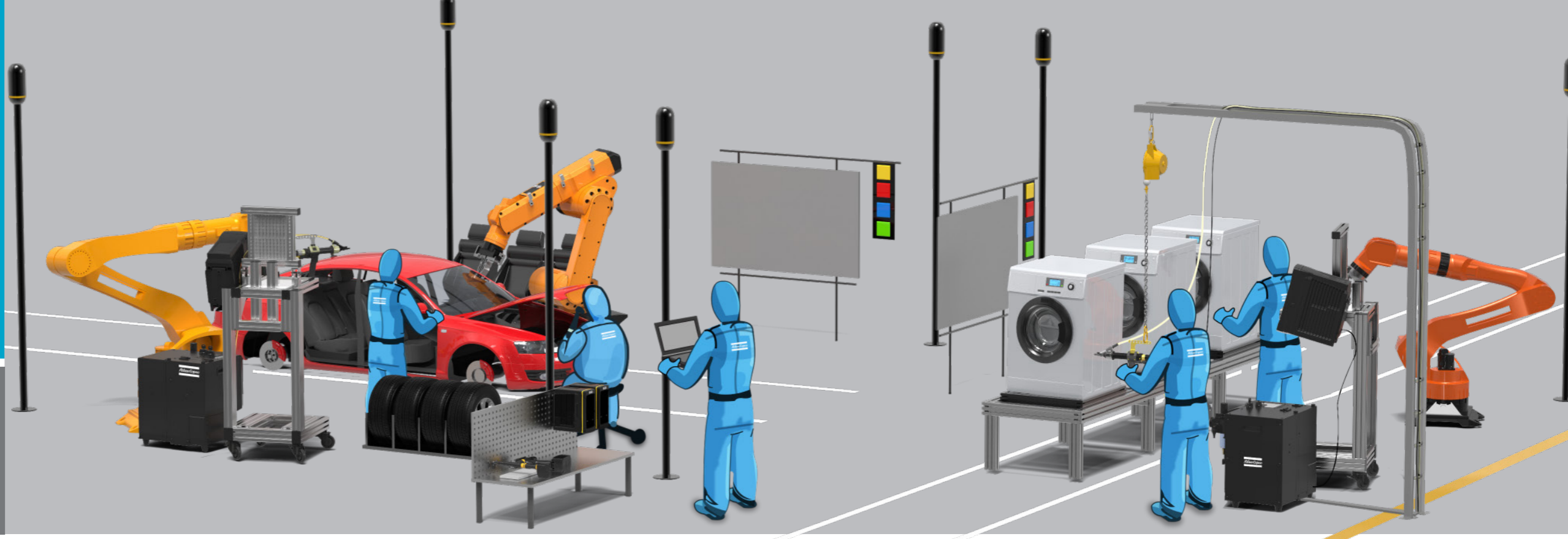
Improved productivity



Human interaction



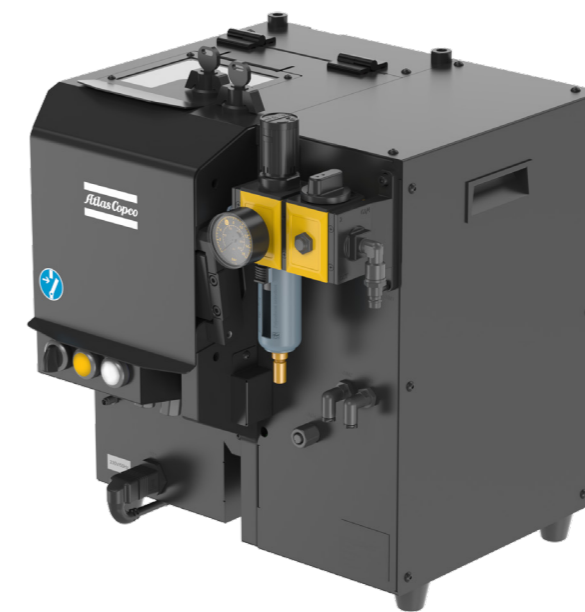
Reduction in energy use



The COMPLETE screw feeding system



Screw feeding tightening module



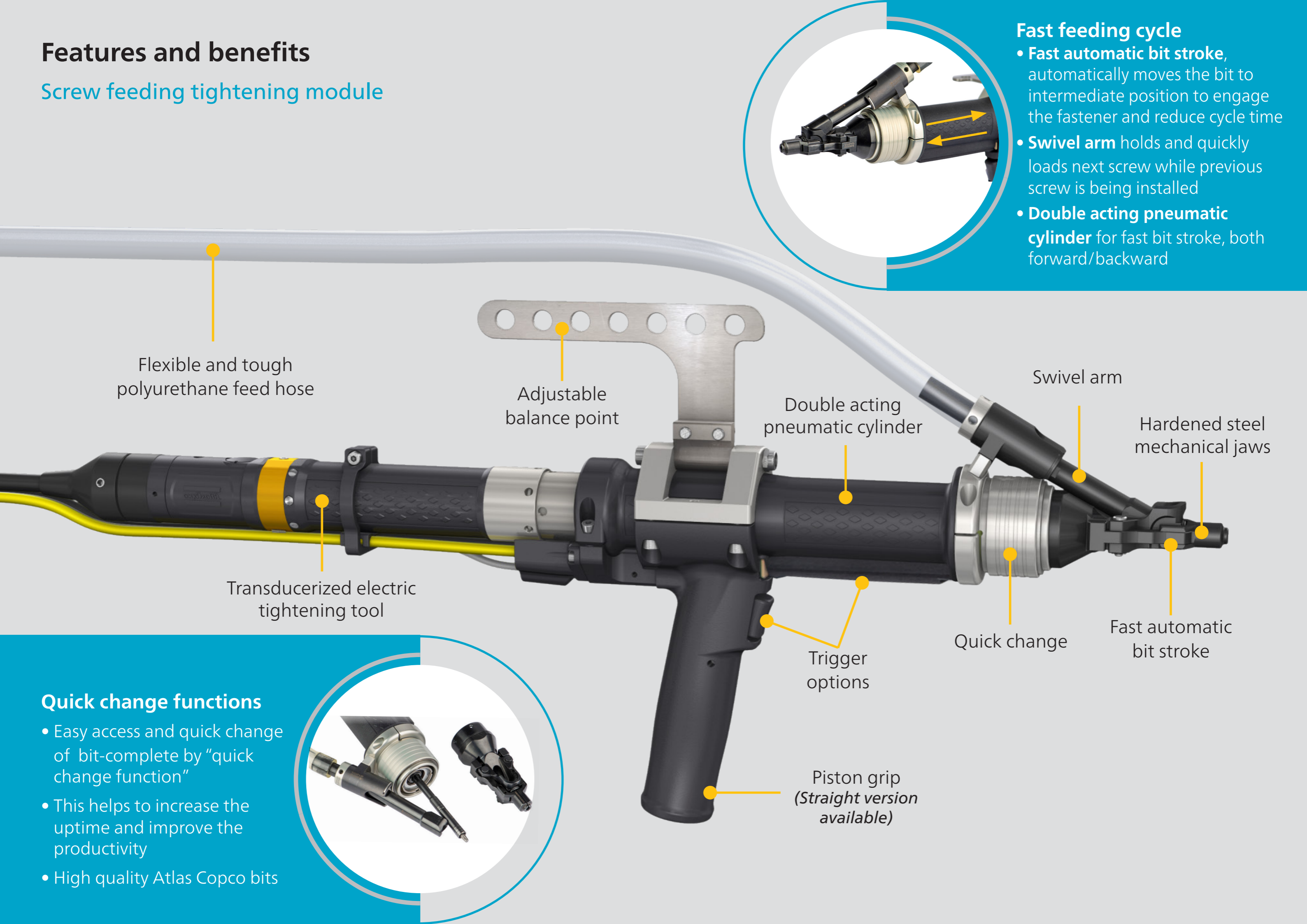
Step feeder



Tightening Controller

Features and benefits

Screw feeding tightening module



Fast feeding cycle

- **Fast automatic bit stroke**, automatically moves the bit to intermediate position to engage the fastener and reduce cycle time
- **Swivel arm** holds and quickly loads next screw while previous screw is being installed
- **Double acting pneumatic cylinder** for fast bit stroke, both forward/backward

Flexible and tough polyurethane feed hose

Adjustable balance point

Double acting pneumatic cylinder

Swivel arm

Hardened steel mechanical jaws

Transducerized electric tightening tool

Quick change

Fast automatic bit stroke

Trigger options

Piston grip
(Straight version available)

Quick change functions

- Easy access and quick change of bit-complete by "quick change function"
- This helps to increase the uptime and improve the productivity
- High quality Atlas Copco bits

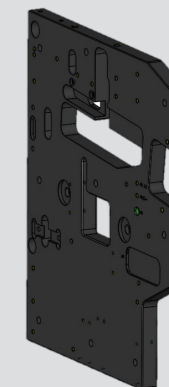


Features and benefits

Step feeder

3 liters of fill volume for fasteners

Plug and play separator unit can be exchanged with no need for alignment



Patented vertical wall to increase **stability** and **reduce vibration**. The maintenance intervals are longer

- Reliable operation
- Gentle on fasteners
- Less vibration
- Less noise
- Less dust
- Quick trouble-shooting
- Modular construction
- Easy set up and installation

Integrated sensors

- Fill level sensor
 - Digital sensor in pan
 - Analog sensor on top (*optional*)
- Optical track fill sensor
- Escapement stroke sensors
- Feeder tube sensor

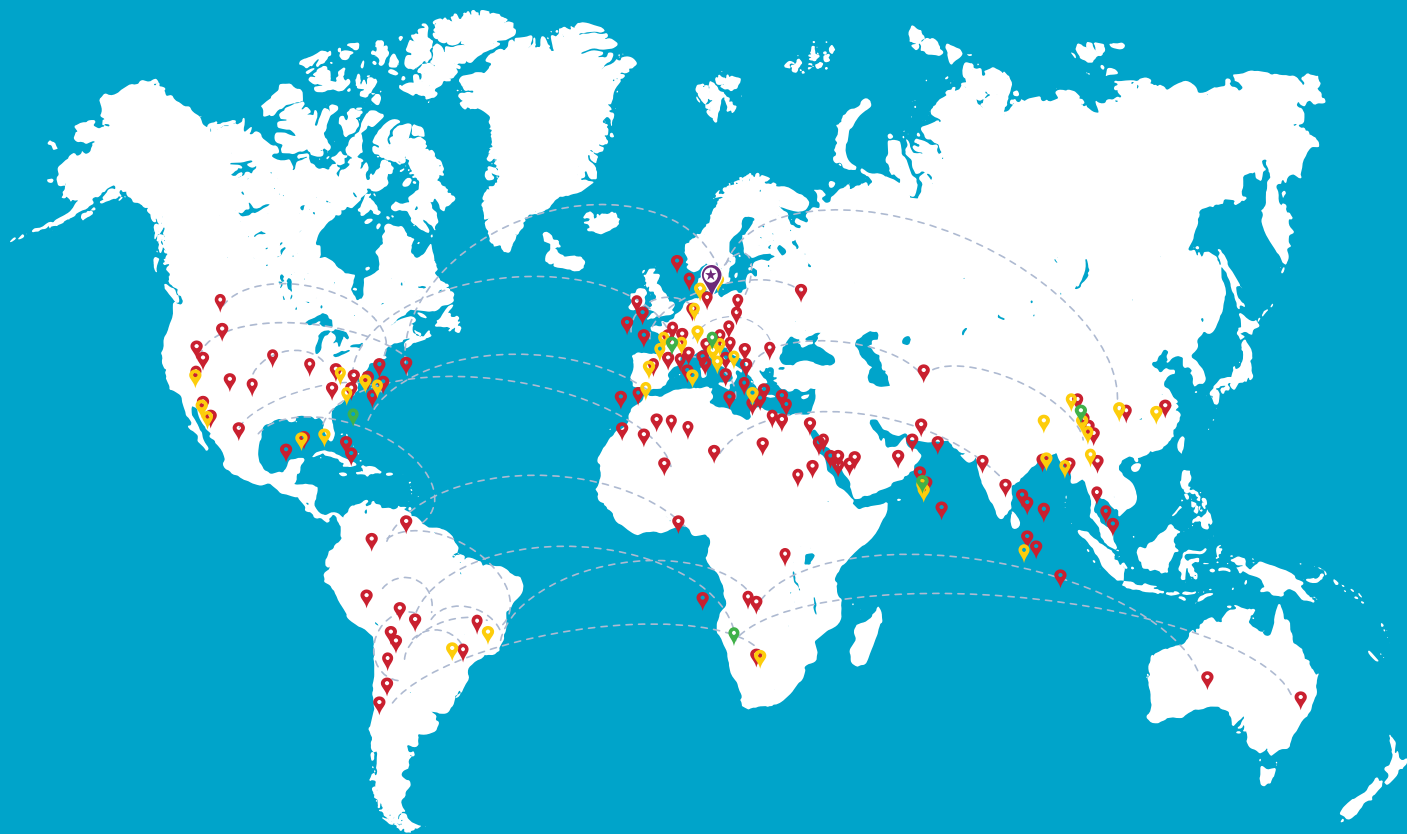
Controller

Power Focus 6000

- Integrated interface to step feeder
- No additional PLC required
- Reduced cycle time using advanced tightening control
- Managing multiple virtual stations



We are where you are...



- Local and global reach
- Service support for a complete screw feeding system

The Atlas Copco logo, featuring the company name in a stylized, italicized font between two horizontal bars.

Atlas Copco Industrial Technique AB

(publ) SE-105 23 Stockholm, Sweden

Phone: +46 8 743 80 00

Reg. no: 556014-2720

atlascopco.com

