




*Atlas Copco*



# Efficient high pressure air and nitrogen solutions

Making agility count by optimizing pressure to footprint ratio for your air or nitrogen needs

## Solving complex industrial challenges with specialized agile solutions

When you rely on Atlas Copco Specialty Rental, we don't just deliver the equipment – we offer a full end-to-end service. From sizing and scoping, to logistics and installation, the entire operation, servicing and dismantling... You can continue to focus on your main business, while our specialized fleet and expertise ensures you're always one step ahead.

*We aim to remain the world's most trusted partner, solving complex industrial challenges with specialized agile solutions. Designed and implemented by passionate people who continually strive for new best ways.*

## We make agility count

- Turning change into an opportunity for growth
- A unique fleet
  - Global network with local presence
  - Highly experienced experts

## 5600 cfm with the footprint of a 20' container

The TwinAir 2800+, the newest high-pressure solution in our fleet, reduces operational expenses and footprint while providing you the pressure and flow you need when you need it.

### When you need high pressure air or nitrogen on

- Offshore applications on vessels
- Drill rigs
- Oil & gas platforms

### And you need

- Equipment that is RigSafe and Safe Zone certified
- Highest efficiency for minimal footprint
- Reduced operational expenses
- Remote monitoring

**RIGSAFE AND SAFE ZONE CERTIFIED**

**-60% FOOTPRINT**

**EFFICIENCY INCREASE +20%**

## When you want the most efficient solution

### Why 35 bar is the new 25

*“The new TwinAir 2800+ is a gamechanger. The stackable design and increased performance and efficiency impacts your entire project, from the logistics to your entire operational efficiency”*

### Let's compare 2 set-ups to get nitrogen at

4000 CFM (113 m <sup>3</sup> /min)	100 bar (1450 psi)	97% Nitrogen purity
<h4>With 25 bar</h4>	<h4>With 35 bar</h4> <ul style="list-style-type: none"> <li>✓ Stackable</li> <li>✓ Higher pressure &amp; flow</li> </ul>	
	<p><b>-60% FOOTPRINT</b></p>	<p><b>-25% EMISSIONS</b> -28% FUEL CONSUMPTION</p>
	<p><b>-20% LOGISTIC COSTS</b></p>	<p><b>-50% ONSITE COSTS</b></p>



Wondering how much you could save? Contact us today at [www.atlascopco.com/rental](http://www.atlascopco.com/rental)

# An unprecedented space and cost-saving rental solution

The TwinAir 2800+ will meet and exceed your expectations on every level.



### The only way is up

When space is limited, sometimes the only way is up. In compliance with ISO 14122 standards and offshore requirements, Atlas Copco Rental has developed a **lightweight modular ergonomic work platform**. It is equipped with a walkway and handrail which provides safe access and excellent fall protection and thus significantly **reducing risks** of injuries to the operators.



### Safety comes standard

The TwinAir 2800+ is a Rigsafe and Safe Area compressor **designed for offshore applications** on vessels, drill rigs, and oil & gas platforms. Optionally, the TwinAir 2800+ can be equipped with **gas detectors**, which safely shuts down the compressor in the unlikely event of gas detection or similar hazards.



### Certified and available immediately

All components are installed in a functional, **DNV 2.7-1 and EN12079 certified 20ft ISO CSC container** with 3 layers of heavy-duty paint, which makes the Total Solution suitable for arctic and desert type conditions. Optionally, it can be delivered compliant to **NORSOK Z015** for the Norwegian market.



### Remote monitoring

Remote monitoring features allow for **close follow-up** without having to travel out to sea or remote locations.

# Equipment often combined with the TwinAir2800+



## Air treatment

### High pressure air dryers

- Dewpoint down to -70°C ADP
- Pressure rating up to 500psi (35bar)
- Modular models with flowrate up to 5000cfm (140m<sup>3</sup>/min)
- Offshore certified DNV2.7-1 lifting frame



## Nitrogen

### High pressure and efficient nitrogen generators

- Nitrogen purity from 95% to 99,5%
- Pressure rating up to 500psi (35bar)
- Modular models with a flowrate up to 3.500 CFM (100m<sup>3</sup>/min)
- RigSafe & Safe zone area
- Offshore certified DNV2.7-1 lifting frame



## Boosters

### High pressure air/nitrogen boosters

- Inlet pressure up to 500psi (35bar)
- Outlet pressure up to 5.000psi (345bar)
- Modular models with a flowrate up to 4.500 CFM (127m<sup>3</sup>/min)
- RigSafe & Safe zone area
- Offshore certified DNV2.7-1 lifting frame



## Unique Expertise

### Qualified and certified service engineers

- Fully offshore certified
- Qualified & certified for high pressure installations
- Several years of high pressure & offshore experience



# Technical data

## Twinair 2800+: diesel driven oil-lubricated high pressure air compressor

Compressor information		
Max. working pressure	bar(e)	35
Min. effective working pressure	bar(e)	15
Free air delivery @35barg	m <sup>3</sup> /min	2 x 35
Free air delivery @22barg	m <sup>3</sup> /min	2 x 39
Number of compression stages		2
Air outlet connection	BSP	2 x 3"
After cooler	°C	A + 15
Fuel consumption @ 100% FAD	l/h	2 x 101
Max. ambient temperature	°C	50

General information					
Dimensions (l x b x h)	mm	6058x2438x2890	Sound power level (LWA)	dB(A)	115
Weight with full fuel tank	kg	18.000	Sound pressure at 7 meter (LPA)	dB(A)	87
Capacity of fuel tanks	l	1800			

Compressor information	
Offshore & Rig Safe equipment - CE certified	PACE & XPR technology on board
Remote monitoring & screen mirroring	External emergency stop (110/24 volt)
Stacking option to create 5.600 cfm on a 20ft footprint	20 ft ISO DNV 2.7-1 container & DNV certified slings
External fuel connection inlet ¾ outlet ½ Integrated	Spillage free container
Integrated after cooler & water separator	Option to comply with NORSOK Z-015 standards

## Y35: diesel driven oil-lubricated high pressure air compressor

Performance		Engine			
Pressure range	bar(g)	15-35	Type	Scania DC16 V8	
Nominal pressure	bar(g)	35	Output	kW	478
Max. capacity	m <sup>3</sup> /min	39,8 @25bar;	Fuel consumption (100% load)	l/h	94,5
		35,4@35bar			
			Max. AdBlue consumption	l/h	6,6

General information					
Dimensions (l x b x h)	mm	5x2.3x2.6 (wagon towbar up)	Ambient temperature	°C	-25/+45
Weight	kg	7690	Internal fuel tank	l	750
Sound Pressure at 7m	db(A)	72	Internal AdBlue tank	l	70
Air outlet temperature	°C	A+15	Typical oil content	mg/m <sup>3</sup>	<3
Air outlet connection		2"			

Main features	
Spillage free frame	Spark arrestor
Integrated aftercooler with bypass	Inlet shutdown
External fuel tank connection	CE certified



Please contact us for more detailed information

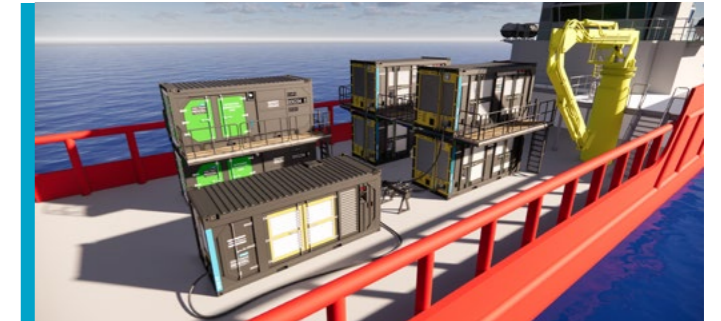
# Ensuring the highest operational efficiency during your projects

## Exceeding your expectations

By adding the Total Solution Visualization tool to our services, we further emphasize our Total solution approach.

## Your requirements

A unique experience of the full project in 3D allows all parties to align during the pre-commissioning phase. We can provide detailed 3D images, videos, 2D installation drawings, and more upon request. Even if footprint isn't your first concern, visualization has many other advantages.



## Mitigate risks

Thanks to accurate simulations QHSE focus points and other challenges can be determined well in advance.



## Certification and compliance

Total Solution Visualization allows us to provide all compliance documents needed for project certifications and other administrative requirements.



## Peace of mind

Everyone is aligned on what to expect which improves operational efficiency throughout the project.

# Making agility count

We take care of your utilities, so you can focus on your business.

- **Emergencies**

Experiencing an unexpected break down? Contact us today to restart your operation in no time!

- **Contingency plan**

A planned maintenance should not impact your operations. Neither should an unplanned break down. With our assistance plan in place, your downtime will be minimized and operations can continue.

- **Agile asset management**

Handle production peaks fast while keeping your assets light with agile temporary utility solutions.

- **Special projects**

Whether your operation is extremely critical (offshore, power plants, chemical plants...) or you just need a lot of equipment... Our specialised fleet is up for the challenge.



## A global player with local presence

140 locations in 80 countries

Always close to you



## Our specialized and agile solutions



**Air compressors**



**Power modules**



**Nitrogen generation**



**Steam**



**Pumps**

**Atlas Copco Rental**  
Making Agility Count

Atlas Copco Specialty Rental  
[www.atlascopco.com/rental](http://www.atlascopco.com/rental)

